

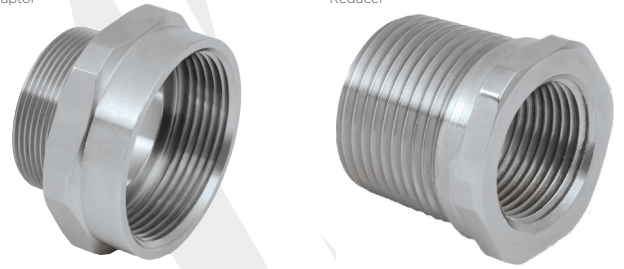
737

737 ADAPTORS & REDUCERS, GLOBALLY APPROVED, EXPLOSIVE ATMOSPHERE CABLE / CONDUIT ACCESSORY

- Used for thread conversion
- Wide range of thread types and sizes
- General purpose / industrial version available
- Equipment interface o-ring seal available
- -60°C to +200°C (metallic versions)
- Reducers Globally marked:
 - IECEx, ATEX, UL and cCSAus, UKEX
- Adaptors Globally marked:
 - Up to 2 steps up in size: IECEx, ATEX, UKEX, cCSAus

Adaptor

Reducer



TECHNICAL CLASSIFICATION

| | |
|----------------------------------|---|
| DESIGN SPECIFICATION | BS 6121:Part 1:1989 |
| ENCLOSURE PROTECTION | IK10 to IEC 62262 (20 joules) Brass and Stainless Steel Only |
| INGRESS PROTECTION RATING** | IP66, IP67 and IP68*** |
| AVAILABLE MATERIALS | Electroless Nickel Plated Brass, Brass, Nylon, Stainless Steel, Aluminium |
| CONTINUOUS OPERATING TEMPERATURE | -60°C to +200°C (Metallic), -20°C to +60°C (Nylon) |

** When CMP installation accessories are used. Refer to www.cmp-products.com for further information. *** IP68 tested to a minimum depth of 30 metres for 12 hours, alternative depths / durations can be provided upon request

HOW TO ORDER

e.g. 737-D-M-2-M-3-4 = Dual certified Ex d & Ex e – M20 (M) x M25 (F) - Stainless Steel

Please refer to Ordering Guide Tables for reference definitions, denoting material variants. When ordering please notify CMP Products in your order if alternative approval markings are required.

When ordering Adaptors & Reducers always state the Male Thread size first.

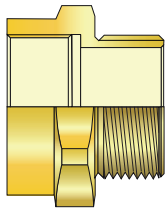
Other thread variations are available on request. For further information on ordering please refer to www.cmp-products.com.

It should be noted that when using CMP Type 737 Thread Conversion Adaptors and Reducers in association with Explosion Protected electrical equipment the following basic rules must be observed in line with good engineering practice:

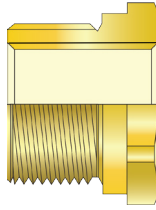
For direct entry Ex d applications, only adaptor or reducer should be used per cable entry.

The female connection thread of a Thread Conversion Adaptor shall "step" not more than two "size" up in the case of a thread gender change. Example; M20 (M) to M32 (F) or M20 (M) to 1" NPT (F) is permitted. Whereas M20 (M) to M40 (F) or M20 (M) to 1½" NPT (F) is not permitted.

CMP 737 Adaptor



CMP 737 Reducer



GLOBAL PRODUCT CERTIFICATION

| | | | |
|-------------------------------|---|-------------------------------|--|
| ATEX CERTIFICATE | CML18ATEX1320X | IECEx CERTIFICATE | IECEx CML18.0177X, IECEx SIM 15.0002X |
| UKEX CERTIFICATE | CML 21UKEX1238X | CODE OF PROTECTION | Ex db I Mb, Ex eb I Mb, Ex db IIC Gb, Ex eb IIC Gb, Ex ta IIIC Da (Ex eb IIC Gb, Ex ta IIIC Da only on nylon version) |
| CODE OF PROTECTION | ⊕ II 2G 1D Ex db IIC Gb, Ex eb IIC Gb, Ex ta IIIC Da ⊕ I M2 Ex db I Mb, Ex eb I Mb ⊕ II 2G 1D Ex eb IIC Gb, Ex ta IIC Da only on Nylon version) | COMPLIANCE STANDARDS | IEC 60079-0,1,7,31 |
| COMPLIANCE STANDARDS | EN 60079-0,1,7,31 | UL CERTIFICATE | E214221 (Reducers with NPT or Metric Threads only) |
| cCSAus CERTIFICATE (16-100) | 1055233 | CODE OF PROTECTION | Class I Groups A,B,C,D; Class II Groups E,F,G; Class III, Ex de II, Class I, Zone 1, AEx de II; (Not available in Nylon) |
| CODE OF PROTECTION | Class I, Groups A, B, C and D; IP66, 67, 68; Enclosure Type 4X; Class II Groups E, F and G; Class III, Ex de II, Class I, Zone 1, AEx de II; (Not available in Nylon) | COMPLIANCE STANDARDS | UL 1203 |
| COMPLIANCE STANDARDS | C22.2 No.0, 0.5, 30, 94, CAN/CSA 60079-0,1,7, CAN-CSA 61241-1-1, UL50 Edition 11, UL1203 Edition 4, UL 60079-0,1,7 | UkrSEPRO CERTIFICATE | CL 19.0372X |
| EAC CERTIFICATE | RU C-GB.AJ07.B.02500/20 | CCOE/PESO (INDIA) CERTIFICATE | P548696, P533772 |
| RETIE APPROVAL NUMBER | 03866 | INMETRO APPROVAL | TÜV 12.1332X |
| CCC CERTIFICATE | 2020322313003177 | UAE ECAS-Ex CERTIFICATE | 24-03-106290/E24-03-110155/NB0007 |
| KCS CERTIFICATE | 14-GA4B0-0249X | SANS | IA MS-XPL21804 21.0006X |
| GOST R INDUSTRIAL CERTIFICATE | 04ИДН0101.ГВ.С02492 (applies to non-explosive atmosphere product only) | MARINE APPROVALS | BV: 43180 BV, ABS: 22-2230864-PDA |

DIMENSION DATA TABLES

- 1 - Select male thread from the left hand column of Table 'A'
- 2 - Select the female thread size from the top of Table 'A', referenced 'A**' for Adaptor and 'R**' for Reducer
- 3 - Using this code reference, please refer to the corresponding dimensions in Table 'B'

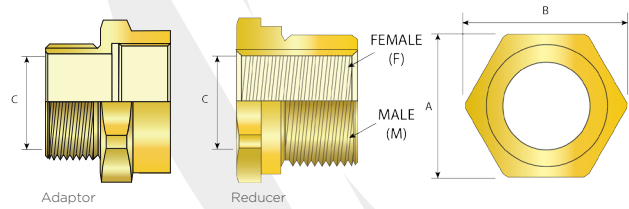


TABLE A - FEMALE THREAD SIZE

| TABLE A - MALE THREAD SIZE | METRIC | | | | | | | | | | NPT | | | | | | | | | |
|----------------------------|--------|-----|-----|-----|-----|-----|-----|-----|-----|------|------|------|-----|--------|--------|-----|--------|-----|--------|-----|
| | M16 | M20 | M25 | M32 | M40 | M50 | M63 | M75 | M90 | M100 | 1/2" | 3/4" | 1" | 1 1/4" | 1 1/2" | 2" | 2 1/2" | 3" | 3 1/2" | 4" |
| M16 | A01 | A04 | A08 | | | | | | | | A03 | A08 | | | | | | | | |
| M20 | R01 | A05 | A07 | A12 | | | | | | | A05 | A11 | A15 | | | | | | | |
| M25 | R05 | R03 | A09 | A14 | A18 | | | | | | R03 | A09 | A16 | A18 | | | | | | |
| M32 | R06 | R06 | R06 | A17 | A19 | A24 | | | | | R06 | R06 | A17 | A19 | A24 | | | | | |
| M40 | R08 | R08 | R08 | R08 | A20 | A29 | A33 | | | | R08 | R08 | R08 | A21 | A25 | A33 | | | | |
| M50 | R10 | R10 | R10 | R10 | R10 | A28 | A35 | A49 | | | R11 | R11 | R10 | R10 | A27 | A32 | A42 | A52 | | |
| M63 | | R12 | R12 | R12 | R12 | R12 | A37 | A48 | A53 | | R12 | R12 | R12 | R12 | R12 | A37 | A44 | A53 | | |
| M75 | | R14 | R14 | R14 | R14 | R16 | R15 | A47 | A55 | A57 | | R14 | R14 | R14 | R14 | R14 | A46 | A55 | A61 | |
| M90 | | | | | R19 | R19 | R17 | R19 | | A60 | | | | | | | R18 | | | |
| M100 | | | | | | | R20 | R20 | R20 | | | | | | | | | | A58 | |
| 1/2" | R02 | A06 | A07 | A12 | | | | | | | A02 | A10 | A15 | | | | | | | |
| 3/4" | R04 | R04 | A09 | A16 | A22 | | | | | | R04 | A09 | A16 | A18 | | | | | | |
| 1" | R07 | R07 | R07 | A13 | A19 | | | | | | R07 | R07 | A17 | A19 | A24 | | | | | |
| 1 1/4" | R09 | R09 | R09 | R09 | A20 | A23 | | | | | R09 | R09 | R09 | A20 | A25 | A30 | | | | |
| 1 1/2" | | R10 | R10 | R10 | R11 | A26 | A34 | | | | R10 | R10 | R10 | R10 | A26 | A31 | A41 | | | |
| 2" | | R12 | R12 | R12 | R12 | R12 | A36 | A43 | | | R12 | R12 | R12 | R12 | R12 | | A39 | A50 | | |
| 2 1/2" | | R14 | R14 | R14 | R14 | R13 | R13 | A40 | | | R14 | R14 | R14 | R14 | R14 | R14 | A45 | A54 | | |
| 3" | | R17 | R19 | R19 | | R18 | R19 | R19 | A56 | | R17 | | R18 | R18 | R18 | R18 | R19 | A51 | A59 | A62 |
| 3 1/2" | | | | R17 | | R20 | R20 | R20 | R20 | | | | R20 | R20 | R20 | R20 | R20 | R20 | | |
| 4" | | | | | | R21 | R21 | R21 | | | | | | R21 | R21 | R21 | R21 | R21 | | |

TABLE B - REDUCERS

| TABLE A REF. | ACROSS FLATS 'A' | ACROSS CORNERS 'B' |
|--------------|------------------|--------------------|
| R01 | 24.0 | 26.4 |
| R02 | 27.0 | 29.7 |
| R03 | 30.0 | 33.0 |
| R04 | 31.5 | 34.7 |
| R05 | 31.5 | 34.7 |
| R06 | 37.6 | 41.4 |
| R07 | 41.0 | 45.1 |
| R08 | 46.0 | 50.6 |
| R09 | 50.0 | 55.0 |
| R10 | 55.0 | 60.5 |
| R11 | 60.0 | 66.0 |
| R12 | 70.0 | 77.0 |
| R13 | 79.0 | 86.9 |
| R14 | 80.0 | 88.0 |
| R15 | 84.0 | 92.4 |
| R16 | 90.2 | 99.2 |
| R17 | 95.0 | 104.5 |
| R18 | 98.8 | 108.7 |
| R19 | 100.0 | 110.0 |
| R20 | 110.0 | 121.0 |
| R21 | 123.0 | 135.3 |
| R22 | 127.0 | 139.7 |

TABLE B - ADAPTORS

| TABLE A REF. | ACROSS FLATS 'A' | ACROSS CORNERS 'B' | MINIMUM BORE 'C' |
|--------------|------------------|--------------------|------------------|
| A01 | 22.0 | 24.2 | 9.7 |
| A02 | 24.0 | 26.4 | 14.0 |
| A03 | 24.0 | 26.4 | 9.7 |
| A04 | 24.0 | 26.4 | 10.0 |
| A05 | 24.0 | 26.4 | 14.0 |
| A06 | 27.0 | 29.7 | 14.0 |
| A07 | 30.0 | 33.0 | 14.0 |
| A08 | 30.0 | 33.0 | 9.7 |
| A09 | 30.0 | 33.0 | 20.0 |
| A10 | 30.5 | 33.6 | 14.0 |
| A11 | 31.5 | 34.7 | 14.0 |
| A12 | 36.0 | 39.6 | 14.0 |
| A13 | 36.0 | 39.6 | 26.0 |
| A14 | 37.6 | 41.4 | 20.0 |
| A15 | 41.0 | 45.1 | 14.0 |
| A16 | 41.0 | 45.1 | 20.0 |
| A17 | 41.0 | 45.1 | 26.0 |
| A18 | 46.0 | 50.6 | 20.0 |
| A19 | 46.0 | 50.6 | 26.0 |
| A20 | 46.0 | 50.6 | 32.1 |
| A21 | 50.0 | 55.0 | 32.0 |
| A22 | 50.0 | 55.0 | 20.0 |

TABLE B - ADAPTORS

| TABLE A REF. | ACROSS FLATS 'A' | ACROSS CORNERS 'B' | MINIMUM BORE 'C' |
|--------------|------------------|--------------------|------------------|
| A23 | 55.0 | 60.5 | 32.1 |
| A24 | 55.0 | 60.5 | 26.0 |
| A25 | 55.0 | 60.5 | 32.0 |
| A26 | 55.0 | 60.5 | 38.0 |
| A27 | 55.0 | 60.5 | 43.6 |
| A28 | 59.8 | 65.8 | 44.2 |
| A29 | 60.0 | 66.0 | 32.1 |
| A30 | 65.0 | 71.5 | 32.0 |
| A31 | 65.0 | 71.5 | 38.0 |
| A32 | 65.0 | 71.5 | 44.2 |
| A33 | 70.0 | 77.0 | 32.0 |
| A34 | 70.0 | 77.0 | 38.0 |
| A35 | 70.0 | 77.0 | 44.2 |
| A36 | 70.0 | 77.0 | 49.0 |
| A37 | 70.0 | 77.0 | 53.0 |
| A38 | 70.0 | 77.0 | 32.1 |
| A39 | 79.0 | 86.9 | 49.0 |
| A40 | 79.0 | 86.9 | 60.0 |
| A41 | 80.0 | 88.0 | 38.0 |
| A42 | 80.0 | 88.0 | 44.2 |
| A43 | 80.0 | 88.0 | 49.0 |
| A44 | 80.0 | 88.0 | 55.0 |

TABLE B - ADAPTORS

| TABLE A REF. | ACROSS FLATS 'A' | ACROSS CORNERS 'B' | MINIMUM BORE 'C' |
|--------------|------------------|--------------------|------------------|
| A45 | 80.0 | 88.0 | 60.5 |
| A46 | 80.0 | 88.0 | 65.0 |
| A47 | 84.0 | 92.4 | 68.0 |
| A48 | 90.2 | 99.2 | 53.0 |
| A49 | 90.2 | 99.2 | 42.0 |
| A50 | 95.0 | 104.5 | 49.0 |
| A51 | 95.0 | 104.5 | 75.0 |
| A52 | 100.0 | 110.0 | 44.2 |
| A53 | 100.0 | 110.0 | 55.0 |
| A54 | 100.0 | 110.0 | 60.5 |
| A55 | 100.0 | 110.0 | 64.8 |
| A56 | 100.0 | 110.0 | 75.0 |
| A57 | 110.0 | 121.0 | 61.0 |
| A58 | 110.0 | 121.0 | 75.0 |
| A59 | 110.0 | 121.0 | 75.0 |
| A60 | 110.0 | 121.0 | 79.3 |
| A61 | 110.0 | 121.0 | 68.3 |
| A62 | 117.5 | 129.3 | 75.0 |

Additional sizes available upon request. Minimum reducer bore determined by female thread. Dimensions displayed in millimetres.

